

Math Challenge Tournament Guidelines

Before the Tournament

- Familiarize yourself with the **format** and **types of math problems** in the Math Challenge Tournament.
- Practice marking answers correctly on a multiple-choice answer sheet ("bubbling").
- Bring at least **two sharpened pencils** and **erasers**. You may bring a **bottle of water**. **Calculators, notes, reference materials, dictionaries, or any electronic devices are not permitted.**
- Arrive **at least 15 minutes before the start time** for check-in.
- Use the restroom before checking in.

During the Tournament

- **Photos:** Tournament staff may take photos during the event.
- **Answer Submission:** At the end of the tournament, submit your **answer sheet** and make sure you turn in **both test booklets** to the proctor.
- **No Make-up Test:** If you miss the scheduled tournament, **there is no make-up test available.**
- **Integrity & Verification:** We reserve the right to verify information submitted by participants and their guardians. **Any evidence of misrepresentation will result in immediate disqualification and a ban from future competitions.**
- **Test Release:** Tournament test papers will not be publicly released until the tournament window has closed.

Tournament Format

Mental Math Challenge (20 minutes) - 40 mental math problems.

- Speed and accuracy are key—solve as many as possible within **20 minutes**.
- Each problem is worth **2 points**, with a maximum score of **80 points**.

Problem Solving Challenge (40 minutes) - 20 math problems.

- Questions increase in difficulty and point value:
 - First **8 questions: 5 points each**.
 - Next **7 questions: 7 points each**.
 - Final **5 questions: 10 points each**.
- Maximum score: **139 points**.

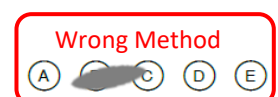
Scoring & Answer Submission

- The combined score from both challenges determines individual awards, with a total maximum score of **219 points**.
- All answers must be recorded on a **paper answer sheet** using a **pencil**.
- **Answering Rules:**
 - Incorrect answers receive 0 points.
 - **Marking more than one answer** for the same question receive 0 points.
 - Students **may skip questions** if they choose. Blank answers receive 0 points.

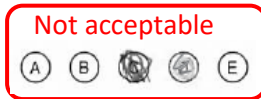
Student's instructions

Marking and Answer Corrections

- Mark only **one answer per question**. Darken or fill in each bubble **completely**. Don't put a tick mark or a cross mark. Faint, half-filled or over-filled bubbles may not be detected correctly and mark as incorrect answer.



- Do not write or draw on the answer sheet.
- Do not fold the answer sheet.
- Multiple markings are invalid and will be marked as incorrect (wrong answer).
- Other examples of not acceptable markings:

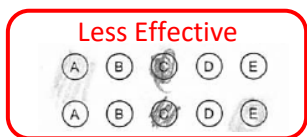


Correcting a mistake: Cross out vs erase

Crossing out the mistake is better than erasing it. If you choose to erase it, you have to erase it completely.



VS



MATH CHALLENGE TOURNAMENT®

Sample of
Answer Sheet



Student ID:

Student Name:

Grade:

Division:

Tournament Loc.:

MENTAL MATH (20 MINUTES)

- | | | | |
|------------------------|------------------------|------------------------|------------------------|
| 1 (A) (B) (C) (D) (E) | 11 (A) (B) (C) (D) (E) | 21 (A) (B) (C) (D) (E) | 31 (A) (B) (C) (D) (E) |
| 2 (A) (B) (C) (D) (E) | 12 (A) (B) (C) (D) (E) | 22 (A) (B) (C) (D) (E) | 32 (A) (B) (C) (D) (E) |
| 3 (A) (B) (C) (D) (E) | 13 (A) (B) (C) (D) (E) | 23 (A) (B) (C) (D) (E) | 33 (A) (B) (C) (D) (E) |
| 4 (A) (B) (C) (D) (E) | 14 (A) (B) (C) (D) (E) | 24 (A) (B) (C) (D) (E) | 34 (A) (B) (C) (D) (E) |
| 5 (A) (B) (C) (D) (E) | 15 (A) (B) (C) (D) (E) | 25 (A) (B) (C) (D) (E) | 35 (A) (B) (C) (D) (E) |
| 6 (A) (B) (C) (D) (E) | 16 (A) (B) (C) (D) (E) | 26 (A) (B) (C) (D) (E) | 36 (A) (B) (C) (D) (E) |
| 7 (A) (B) (C) (D) (E) | 17 (A) (B) (C) (D) (E) | 27 (A) (B) (C) (D) (E) | 37 (A) (B) (C) (D) (E) |
| 8 (A) (B) (C) (D) (E) | 18 (A) (B) (C) (D) (E) | 28 (A) (B) (C) (D) (E) | 38 (A) (B) (C) (D) (E) |
| 9 (A) (B) (C) (D) (E) | 19 (A) (B) (C) (D) (E) | 29 (A) (B) (C) (D) (E) | 39 (A) (B) (C) (D) (E) |
| 10 (A) (B) (C) (D) (E) | 20 (A) (B) (C) (D) (E) | 30 (A) (B) (C) (D) (E) | 40 (A) (B) (C) (D) (E) |

STOP UNTIL THE NEXT INSTRUCTION

PROBLEM SOLVING (40 MINUTES)

- | | |
|------------------------|------------------------|
| 1 (A) (B) (C) (D) (E) | 11 (A) (B) (C) (D) (E) |
| 2 (A) (B) (C) (D) (E) | 12 (A) (B) (C) (D) (E) |
| 3 (A) (B) (C) (D) (E) | 13 (A) (B) (C) (D) (E) |
| 4 (A) (B) (C) (D) (E) | 14 (A) (B) (C) (D) (E) |
| 5 (A) (B) (C) (D) (E) | 15 (A) (B) (C) (D) (E) |
| 6 (A) (B) (C) (D) (E) | 16 (A) (B) (C) (D) (E) |
| 7 (A) (B) (C) (D) (E) | 17 (A) (B) (C) (D) (E) |
| 8 (A) (B) (C) (D) (E) | 18 (A) (B) (C) (D) (E) |
| 9 (A) (B) (C) (D) (E) | 19 (A) (B) (C) (D) (E) |
| 10 (A) (B) (C) (D) (E) | 20 (A) (B) (C) (D) (E) |

Do not write over this. For official use only.

MATH CHALLENGE TOURNAMENT® 2024